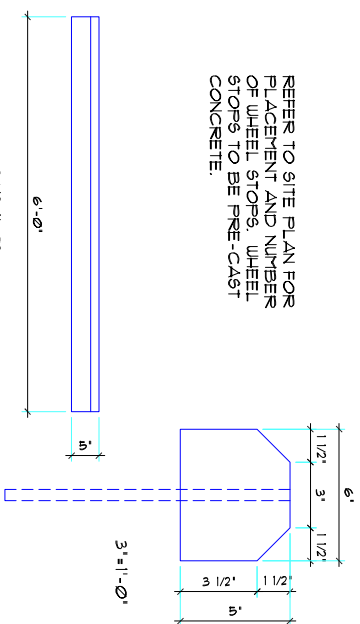


REFER TO SITE PLAN FOR
PLACEMENT AND NUMBER
OF WHEEL STOPS. WHEEL
STOPS TO BE PRE-CAST
CONCRETE.



WHEEL STOP

AS SHOWN

NOTE:
PROVIDE PER SITE PLAN
ONE PER EACH HC
PARKING SPACE

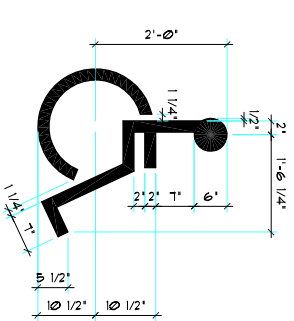
INTERNATIONAL SYMBOL OF
ACCESSIBILITY. BORDER & LETTERING
IN WHITE ON BLUE BACKGROUND
(VERIFY SIZE & LETTERING W/
GOVERNING AUTHORITY)
12"x18"-16 GA. BONDERIZED STEEL SIGN
(VERIFY SIZE & LETTERING W/
GOVERNING AUTHORITY)
ADDITIONAL SIGN (12"x6") REQUIRED
FOR VAN PARKING SPACE -
REF TO SITE PLAN
U-TYPE FLANGED GALVANIZED STEEL
SIGN POST SET IN CONC. A MIN. DEPTH
OF 3'-0"

SLOPE CONC. UP 1" TO POST
12"x12"x36" MIN. DEEP CONC. FOOTING

NOTE:
CONTRACTOR TO VERIFY ALL
STATE APPROVED OR ADDITIONAL
REQUIREMENTS FOR INTERIOR
ACCESSIBLE SIGNAGE.

HANDICAP SIGN

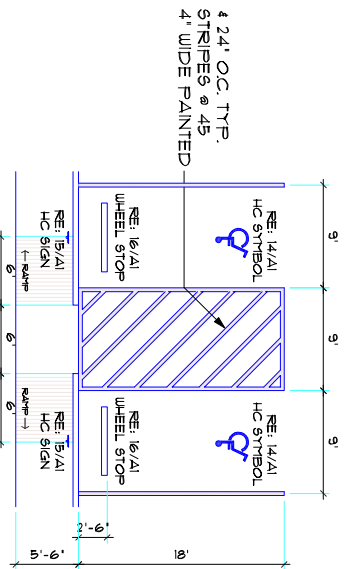
3/4" = 1'-0"



NOTE:
SYMBOL TO BE CENTERED ON WIDTH OF
PARKING STALL. SYMBOLS ARE READ TO
CONTRAST W/ BACKGROUND (WHITE ON BLUE).

HANDICAP SYMBOL

3/4" = 1'-0"



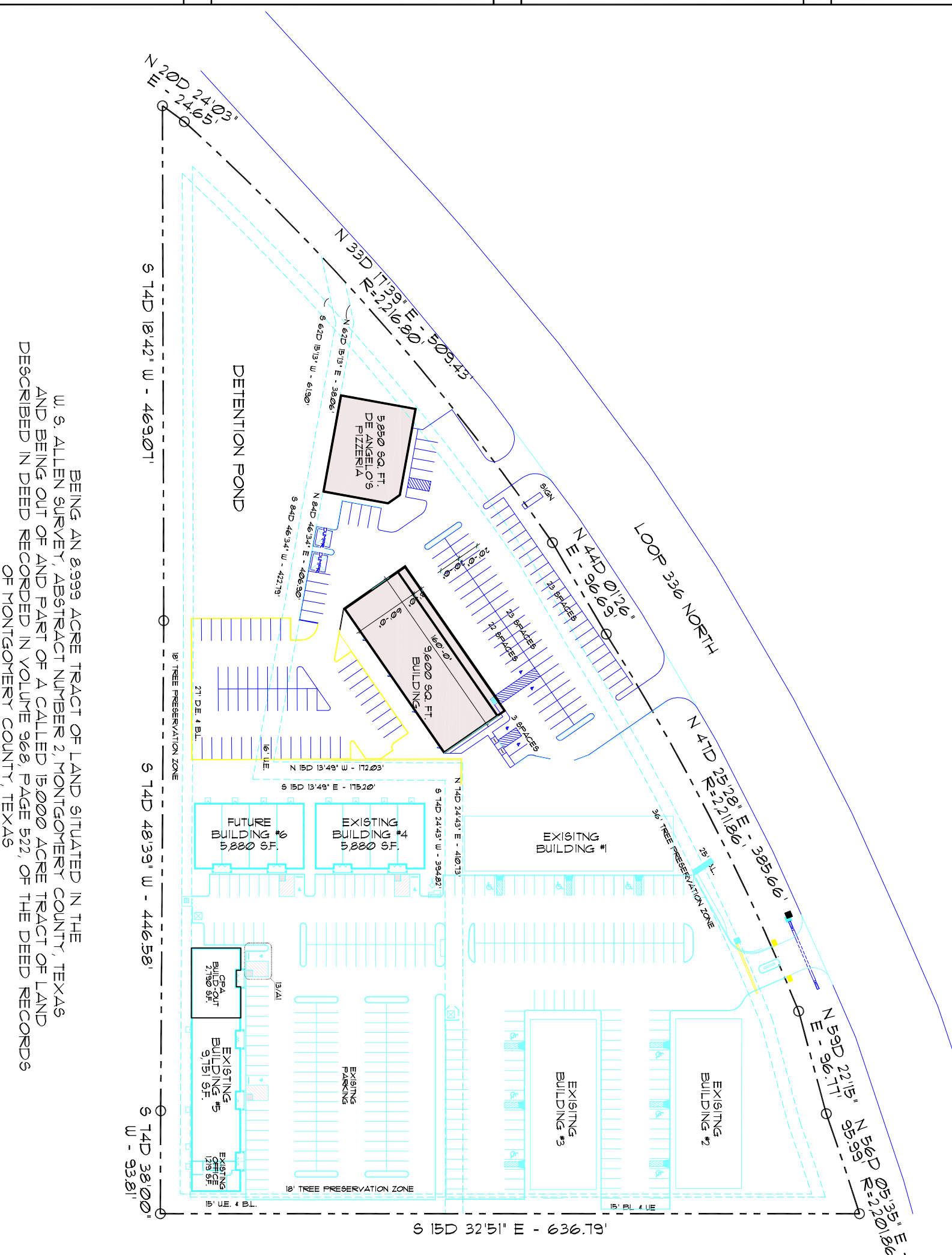
4 24" OC. TYP.
STRIPES @ 45
4" WIDE PAINTED

SPECIAL NOTE - MAX. SLOPE IN
ACCESSIBLE PARKING AREA IS
2 PER CENT - 1/4" PER 12" SLOPE

HANDICAP PARKING

1/8" = 1'-0"

13 SITE PLAN



BEING AN 8.999 ACRE TRACT OF LAND SITUATED IN THE
W. S. ALLEN SURVEY, ABSTRACT NUMBER 2, MONTGOMERY COUNTY, TEXAS
AND BEING OUT OF AND PART OF A CALLED 15.000 ACRE TRACT OF LAND
DESCRIBED IN DEED RECORDED IN VOLUME 968, PAGE 522, OF THE DEED RECORDS
OF MONTGOMERY COUNTY, TEXAS



Revisions:		
No.	Date	Description



**HIGHLAND
STRIP CENTER**
Conroe, Texas

Freeman Associates Inc
ARCHITECTS

772 NORTH FRAZIER, SUITE 206 - CONROE, TEXAS 77301
PHONE: (936) 760-3666 FAX: (936) 448-7777

Project No: 204-23
Plot Date: 6-30-04
Issued For:
Review
Pricing
Construction
Drawn By: JTM

Sheet Title:
SITE PLAN & DETAILS

A1