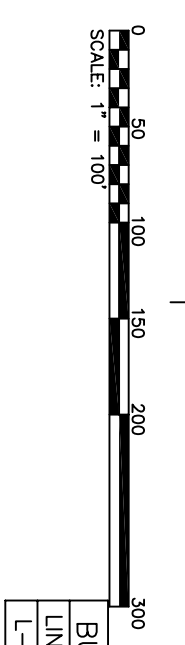
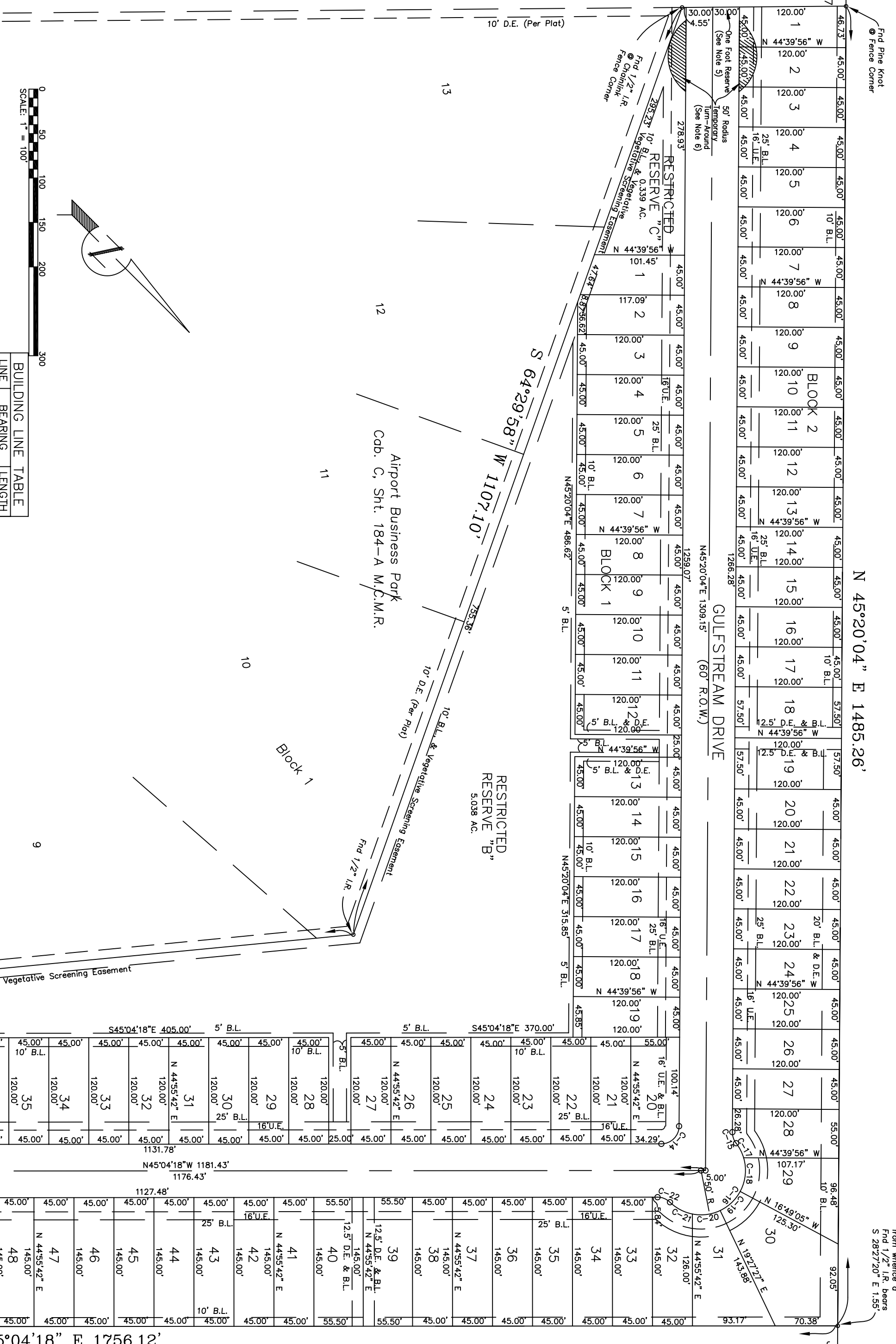


Required Open Space by City of Conroe = 5.27 Acres

RESERVE "A"	Greenbelt / Common Area	(12,218 Sq.Ft., 0.281 Ac)
RESERVE "B"	Access, Drainage & Landscape	(219,455 Sq. Ft., 5.038 Ac)
RESERVE "C"	Greenbelt / Common Area	(14,776 Sq. Ft., 0.339 Ac)

800 Acres
Starrock LP
C.C.F.N. 2003-122393 M.C.R.P.R.

66.5 Acres
Limestone Capital, Inc.
C.C.F.N. 9039913 M.C.R.P.R.



BUILDING LINE TABLE

LINE	BEARING	LENGTH
L-1	N00°04'18\"W	21.21

LINE TABLE

LINE	BEARING	LENGTH
L-1	N57°58'50\"W	14.29
L-2	N69°35'13\"W	65.85
L-3	N69°35'13\"W	65.85
L-4	S69°35'13\"E	65.85

CURVE TABLE

CURVE	RADIUS	LENGTH	DELTA	CHORD BEARING	CHORD DIST
C-1	600.00	121.54	115°6'24\"	N63°47'01\"W	121.34
C-2	600.00	256.72	243°0'55\"	N57°19'48\"W	254.77
C-3	570.00	104.26	102°8'50\"	N64°20'49\"W	104.26
C-4	570.00	59.22	55°7'21\"	N62°05'00\"W	59.19
C-5	570.00	45.05	43°1'41\"	N67°19'23\"W	45.04
C-6	630.00	269.56	243°0'55\"	N57°19'48\"W	267.51
C-7	630.00	24.16	2°11'49\"	N68°29'19\"W	24.16
C-8	630.00	45.13	4°06'17\"	N68°20'16\"W	45.12
C-9	630.00	39.71	3°36'41\"	N61°28'47\"W	39.70
C-10	630.00	37.27	3°32'21\"	N57°58'46\"W	37.26
C-11	630.00	45.59	4°08'46\"	N54°12'43\"W	45.58
C-12	630.00	45.18	4°06'33\"	N50°05'03\"W	45.17
C-13	630.00	32.52	2°57'28\"	N46°33'02\"W	32.52
C-14	20.00	31.27	89°35'36\"	N89°32'07\"W	28.18
C-15	20.00	13.34	38°12'48\"	N26°13'40\"E	13.09
C-16	50.00	150.26	172°10'51\"	S86°37'18\"E	99.27
C-17	50.00	18.55	2°15'08\"	N17°44'51\"E	18.44
C-18	30.00	39.10	44°48'31\"	N50°46'40\"E	38.11
C-19	50.00	31.66	36°16'32\"	S88°40'49\"E	31.13
C-20	50.00	32.08	36°45'49\"	S52°09'38\"E	31.53
C-21	50.00	28.87	33°04'51\"	S17°4'18\"E	28.47
C-22	20.00	15.49	44°22'26\"	S22°35'05\"E	15.11
C-23	570.00	243.89	243°0'55\"	S27°19'48\"E	242.03
C-24	570.00	24.37	2°26'58\"	S46°17'47\"E	24.37
C-25	570.00	45.16	4°32'24\"	S49°47'28\"E	45.15
C-26	570.00	45.61	4°35'05\"	S47°11'13\"E	45.60
C-27	570.00	46.37	4°39'40\"	S43°58'35\"E	46.26
C-28	570.00	74.49	7°29'16\"	S65°03'03\"E	74.44
C-29	570.00	7.89	0°47'32\"	S69°11'27\"E	7.88
C-30	630.00	117.32	10°40'11\"	S64°15'08\"E	117.15
C-31	25.00	36.84	84°25'29\"	N78°04'29\"E	33.59
C-32	25.00	39.76	91°07'34\"	N13°32'37\"W	35.70

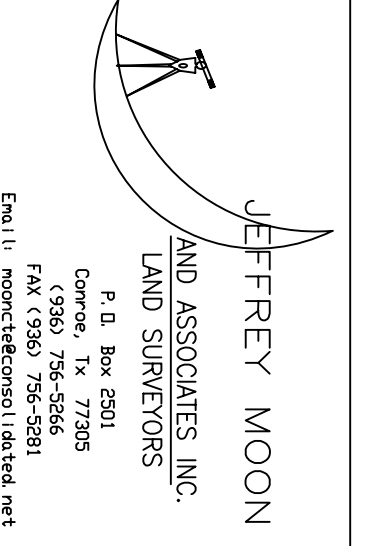
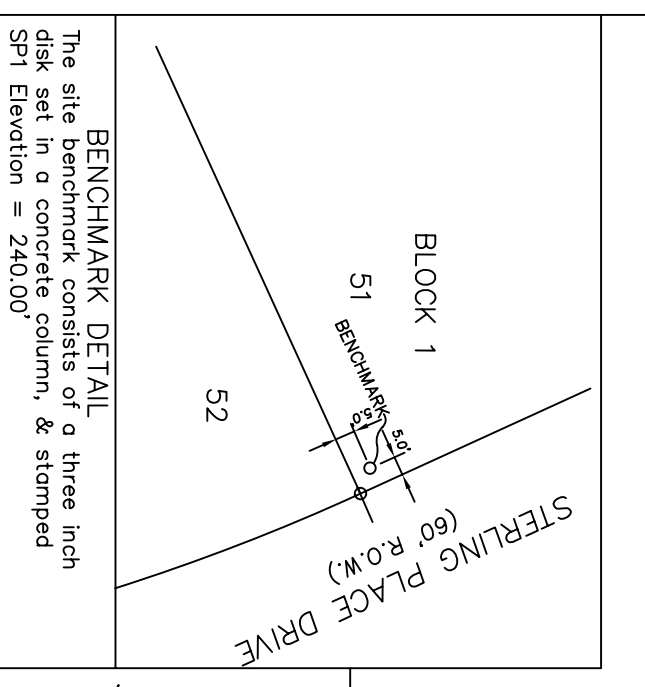
FINAL PLAT STERLING PLACE SECTION ONE

STERLING RIDGE PARTNERS, LTD
25,225 ACRES C.C.F.N. 2006-047997 M.C.R.P.R.
A SUBDIVISION OF 25,225 ACRES OF LAND IN
THE J. L. BONNEY SURVEY, A - 657
MONTGOMERY COUNTY, TEXAS.

A UNIT DEVELOPMENT
CONTAINING:
114 LOTS, 2 BLOCKS AND 3
RESTRICTED RESERVES

OWNER / DEVELOPER
Sterling Ridge Partners, Ltd.
206-A S. Loop 336 W Suite # 211
Conroe, Texas 77304
(936) 788-2060
Fax (936) 788-2065
bryan@dagostinocompanies.com

OCTOBER 2007



Sht. 2 of 2

FARM TO MARKET HIGHWAY 1484
Vol. 184, Pg. 240 M.C.D.R.

3.9 Acres
Montgomery County
Vol. 256, Pg. 42 M.C.D.R.

Residual of 50 Acres
Montgomery County
Vol. 255, Pg. 168 M.C.D.R.